

FACT SHEET



Dismantling and Removal of the Benning Power Plant Under Way

Project Overview

Pepco Energy Services (PES) continues to make progress on the planned dismantling and removal of the Benning Power Plant, which is no longer necessary to provide the community's energy needs.

Operations at the Benning Power Plant ceased in June 2012 as planned and approved by regional power authorities. PES then placed the plant into an idle condition termed a "cold closure," a condition in which the major plant equipment such as the steam turbines, boilers and electric generators are no longer operable. As part of the cold closure, the above-ground fuel oil tanks associated with the power plant were emptied, dismantled, and removed from the site. Once the plant was shut down and placed in a cold closure state, PES determined that dismantling and removing the plant would be in the best interests of PES, the District of Columbia, and the local community. The benefits to the community include:

- Elimination of air emissions from burning of fuel oil at the power plant.
- Elimination of fuel oil storage and oil truck deliveries.
- Removal of the visual impact of the power plant and the smoke stacks.
- Removal of any hazardous materials in the power plant.

As described in more detail below, the dismantling and removal of the power plant is a carefully planned and executed project which is currently slated for the following timeline:

Project Timeline

Dismantling of the power plant can be grouped into the following phases: Phase 1: Dismantling of the cooling towers; Phase 2: Demolition of the Benning Power Plant buildings and equipment; Phase 3: Implosion of selected structures; Phase 4: Site restoration.

Phase 1: Dismantling of the cooling towers (*September 2013 - December 2013*)

Crews have started to dismantle the two cooling towers adjacent to the power plant with an estimated completion date in December 2013. These structures are made primarily of wood, plastic, fiberglass, and steel, so conventional methods of demolition — including hammers, shears and heavy equipment — will be used. The work is being performed with all of the required regulatory, environmental and local agency permits.

Phase 2: Demolition of the Benning Power Plant buildings and equipment (*November 2013 – fall 2014*)

The second phase of the project focuses on the dismantling and removal or demolition of the main power plant structures located in the western portion of the Benning Road site, including the five smoke stacks and the buildings that housed the power plant equipment. Crews will continue to use conventional methods of demolition to dismantle most of the plant structures. The work will be performed with all of the required regulatory, environmental and local agency permits. All removal of asbestos and other potentially hazardous building materials will occur under carefully controlled conditions so they are not released during general demolition.

Phase 3: Implosion of the Benning Power Plant (*Summer/fall 2014*)

The company will hire an experienced and highly specialized contractor – with a proven safety record - to use controlled explosive charges to take down a portion of the power plant structures (approximately 30 percent). The implosion will be a one-time event lasting up to five minutes with public notifications and considerable

planning, monitoring, safety measures and dust containment. PES is committed to working safely and respectfully in the neighborhood. We will comply with all regulatory, environmental and local agency requirements regarding this process, and will provide more details as the plans for this work are finalized.

Phase 4: Restoration (*Summer/fall 2014*)

Once the power plant structures have been removed, the foundation will be graded and leveled. At the completion of the project, the site will be inspected and all construction equipment will be removed.

Impact on the Community

PES will work diligently to minimize the impact of the power plant demolition project on residents in surrounding communities and is committed to keeping the community informed every step of the way. During the demolition process, crews will enter the area through the 34th Street gate and will exit onto Anacostia Avenue near the Park Service's maintenance facility. In accordance with the applicable federal and District of Columbia air permit mandates, all trucks removing debris will be fully covered to avoid spillage on the roads. During the initial phase of the project, 10 to 20 trucks are anticipated to enter and exit the station each day. On some days, the number of trucks will be significantly fewer.

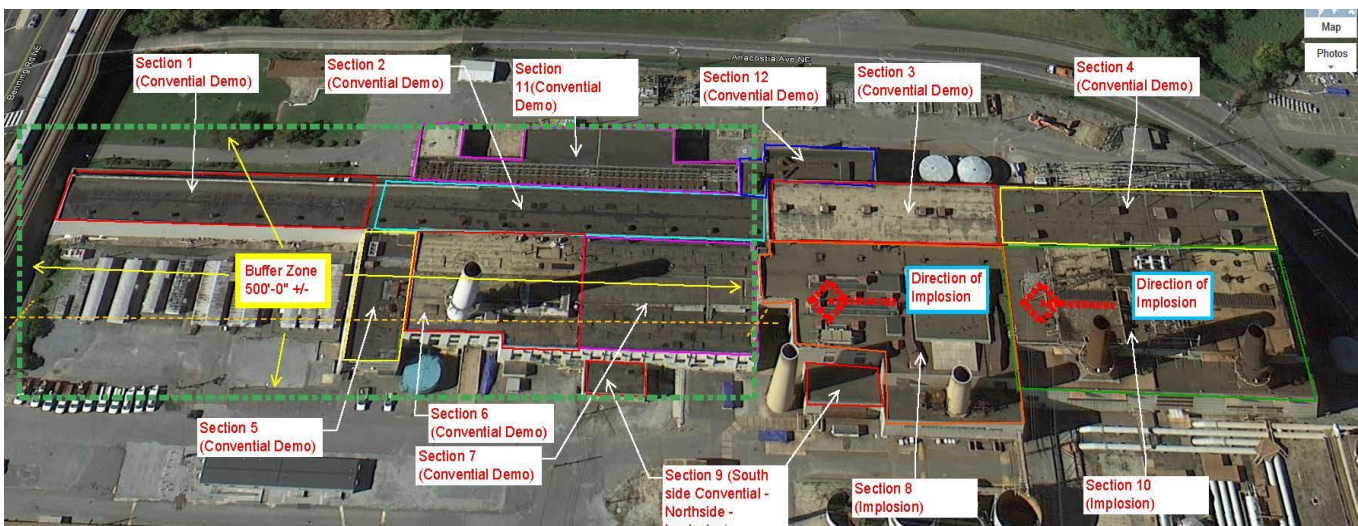
As the project continues, the number of trucks entering and exiting the site will increase to between 20 and 50 trucks per day. PES submitted its traffic plan to the District of Columbia Department of Transportation (DDOT) and is also working with DDOT to identify the best times of travel to avoid creating traffic problems.

- Work will be performed between 7 a.m. and 7 p.m. Monday-Friday. Noise levels from power plant demolition will comply with city noise ordinances (and PES expects noise levels to be minimal).
- All power plant demolition and debris removal activities will be conducted in accordance with all applicable environmental and other regulatory requirements.
- All hazardous materials will be safely removed from each section of the power plant prior to demolition of that section.
- All water used in the management of dust suppression will be managed in accordance with applicable storm water runoff management regulations. Additionally, erosion control/filtration measures will be used to prevent sediment from entering the storm drainage system.

PES's Commitment to Keeping you Informed

It is our commitment to the community that the dismantling and removal is conducted safely and in compliance with all applicable government regulations and standards. PES site supervisors, contractors, and security and safety teams have established appropriate procedures to monitor all work activities and prevent any potential hazard. For more information and updates, community members can visit the website at benningservicecenter.com or call (202) 730-1199.

Project Map



Demolished using conventional means: Sections 1, 2, 3, 4, 5, 6, 7, 11, 12
Imploded using controlled explosive charges: Sections 8, 9, 10