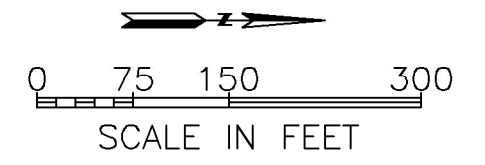




- LEGEND:**
- SURFACE AND SUBSURFACE SOIL SAMPLE LOCATION
 - DIRECT PUSH SAMPLE LOCATION
 - MONITORING WELL LOCATION
 - GEOTECHNICAL SOIL BORING LOCATION
 - NPDES OUTFALL TO ANACOSTIA RIVER
 - PROPERTY BOUNDARY



Benning Road Facility RI/FS Project
3400 Benning Rd., NE
Washington, DC 20019

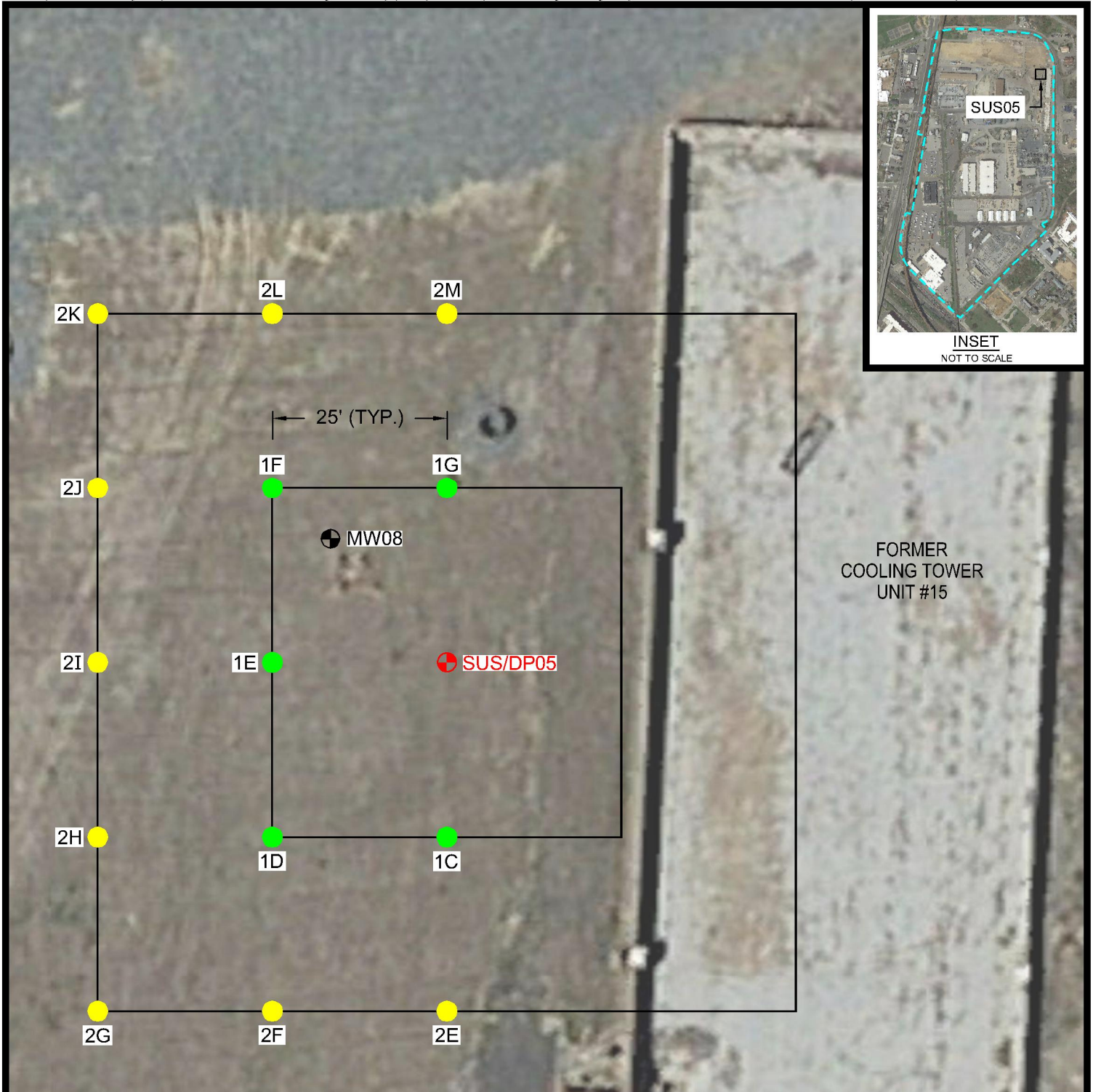
Landside Sample Locations and Delineation Areas

DATE: 10/06/2016

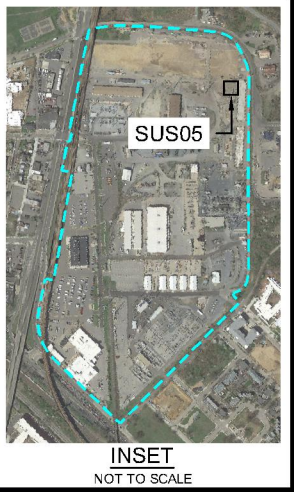
DRAWN BY: LAD

CHECKED BY: RD

FIGURE 3-1

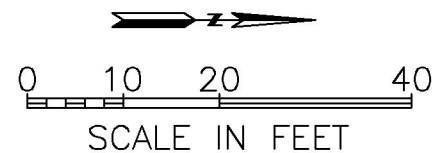


FORMER
COOLING TOWER
UNIT #15



LEGEND:

- PRIMARY SAMPLE LOCATION
- SECONDARY SAMPLE LOCATION
- ⊕ SURFACE AND SUBSURFACE SOIL SAMPLE LOCATION
- ⊕ MONITORING WELL LOCATION



NOTE: EXACT SAMPLE LOCATIONS ARE SUBJECT TO CHANGE PENDING FIELD VERIFICATION.



Benning Road Facility RI/FS Project
3400 Benning Rd., NE
Washington, DC 20019

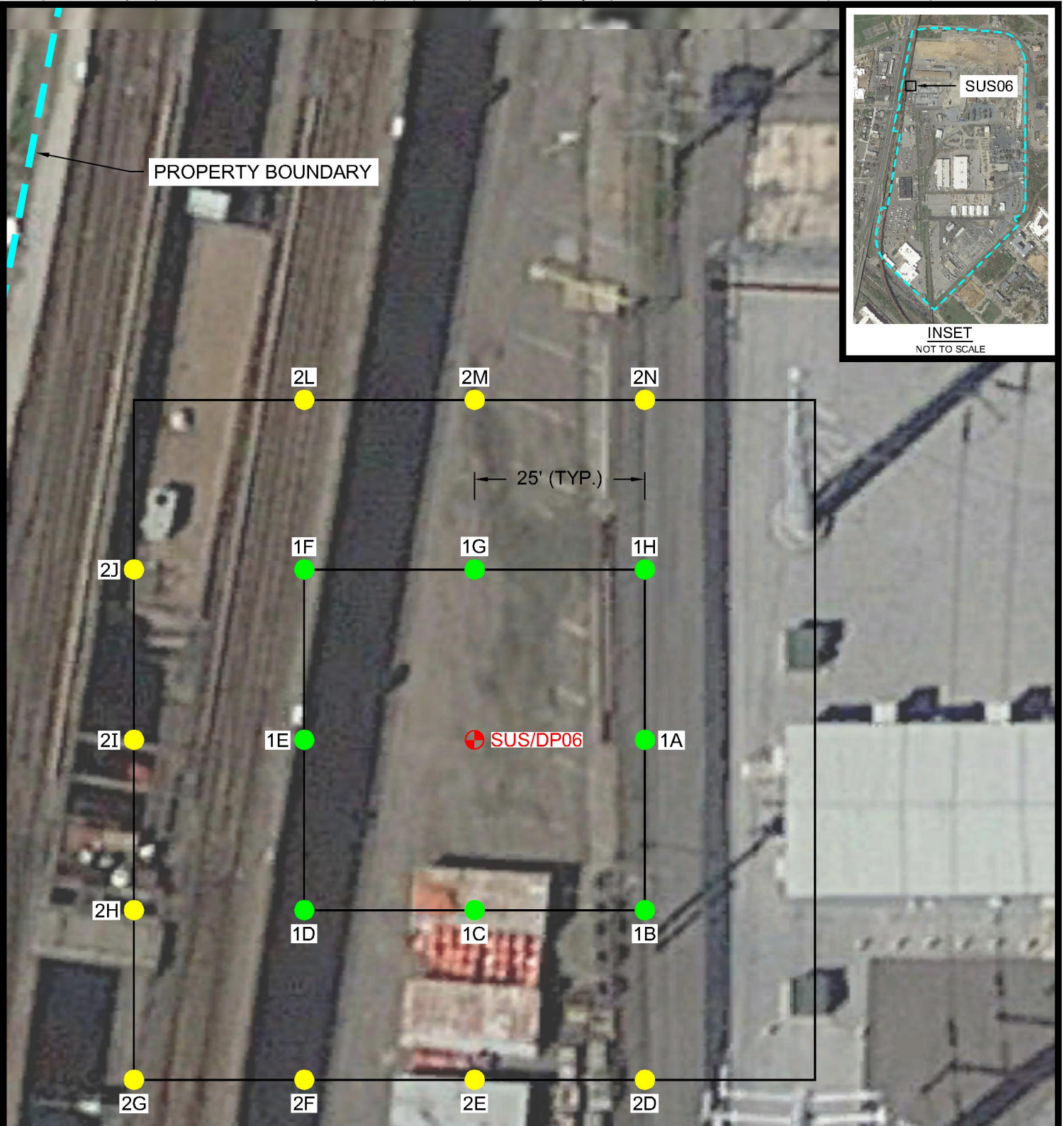
SUS05
Delineation Area

DATE: 09/29/2016

DRAWN BY: LAD

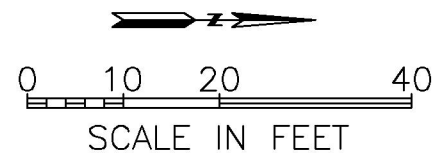
CHECKED BY: RD

FIGURE 3-2



LEGEND:

- PRIMARY SAMPLE LOCATION
- SECONDARY SAMPLE LOCATION
- ⊕ SURFACE AND SUBSURFACE SOIL SAMPLE LOCATION



NOTE: EXACT SAMPLE LOCATIONS ARE SUBJECT TO CHANGE PENDING FIELD VERIFICATION.



Benning Road Facility RI/FS Project
3400 Benning Rd., NE
Washington, DC 20019

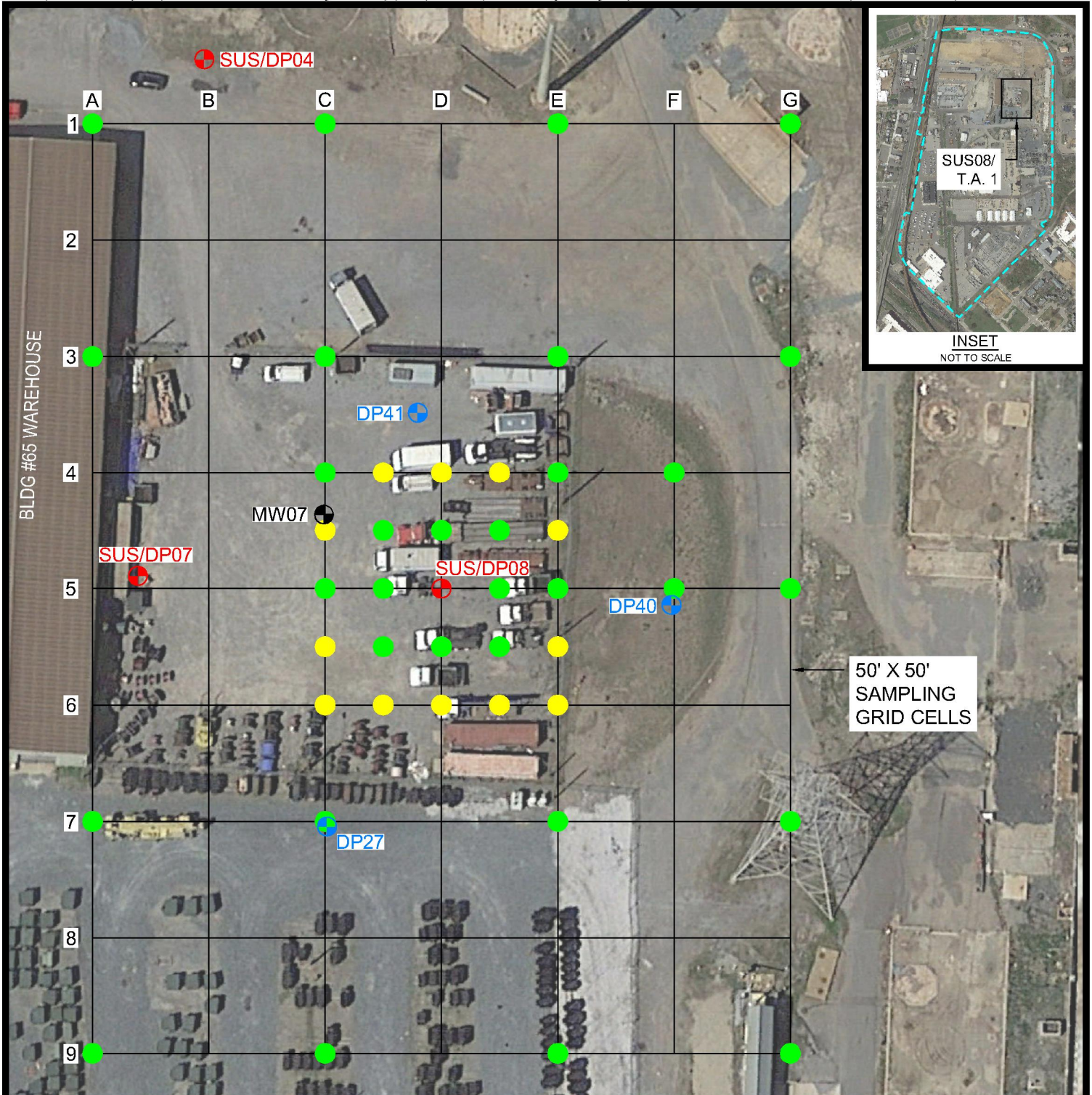
SUS06
Delineation Area

DATE: 09/29/2016

DRAWN BY: LAD

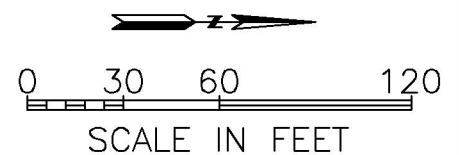
CHECKED BY: RD

FIGURE 3-3



LEGEND:

- PRIMARY SAMPLE LOCATION
- SECONDARY SAMPLE LOCATION
- ⊕ SURFACE AND SUBSURFACE SOIL SAMPLE LOCATION
- ⊕ DIRECT PUSH SAMPLE LOCATION
- ⊕ MONITORING WELL LOCATION



NOTE: EXACT SAMPLE LOCATIONS ARE SUBJECT TO CHANGE PENDING FIELD VERIFICATION.



Benning Road Facility RI/FS Project
3400 Benning Rd., NE
Washington, DC 20019

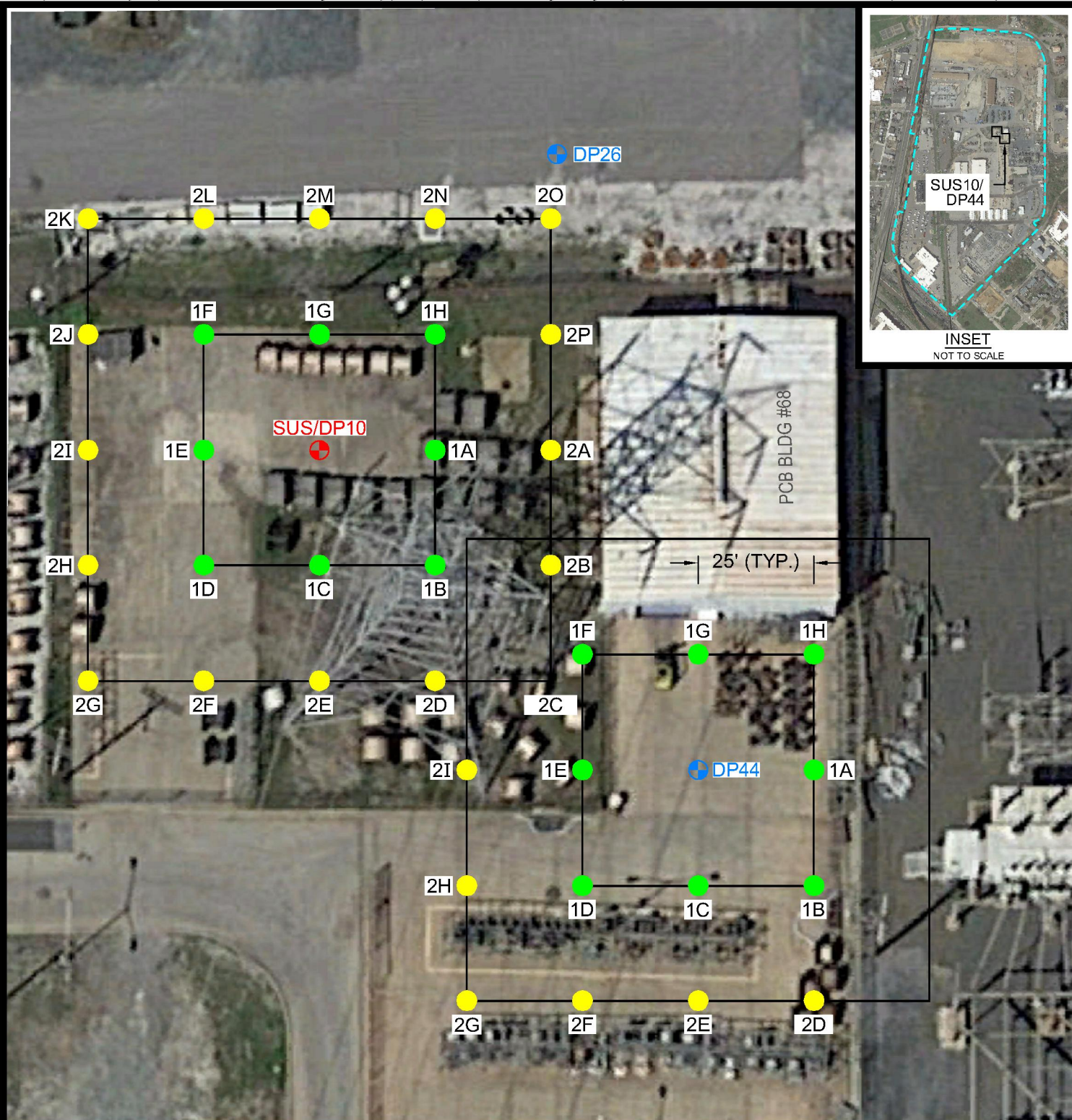
**SUS08 and Target Area 1
Delineation Area**

DATE: 09/29/2016

DRAWN BY: LAD

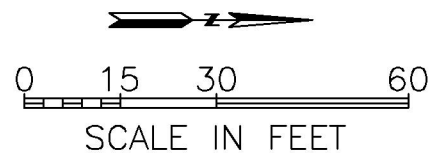
CHECKED BY: RD

FIGURE 3-4



LEGEND:

- PRIMARY SAMPLE LOCATION
- SECONDARY SAMPLE LOCATION
- ⊕ SURFACE AND SUBSURFACE SOIL SAMPLE LOCATION
- ⊕ DIRECT PUSH SAMPLE LOCATION



NOTE: EXACT SAMPLE LOCATIONS ARE SUBJECT TO CHANGE PENDING FIELD VERIFICATION.



Benning Road Facility RI/FS Project
3400 Benning Rd., NE
Washington, DC 20019

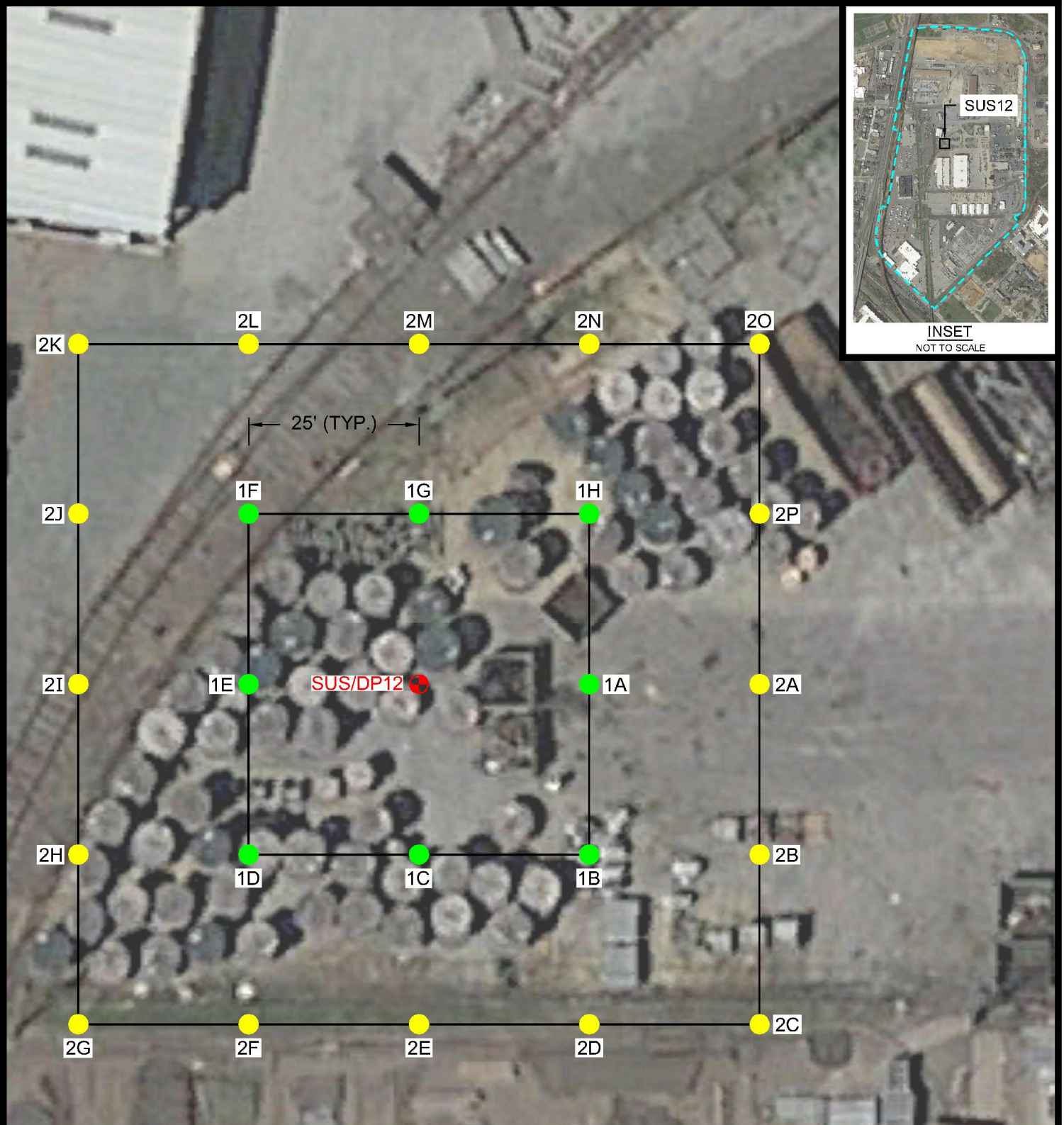
**SUS10 and DP44
Delineation Areas**

DATE: 09/29/2016

DRAWN BY: LAD

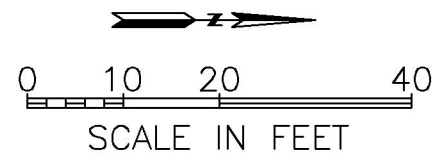
CHECKED BY: RD

FIGURE 3-5



LEGEND:

- PRIMARY SAMPLE LOCATION
- SECONDARY SAMPLE LOCATION
- ⊕ SURFACE AND SUBSURFACE SOIL SAMPLE LOCATION



NOTE: EXACT SAMPLE LOCATIONS ARE SUBJECT TO CHANGE PENDING FIELD VERIFICATION.



Benning Road Facility RI/FS Project
3400 Benning Rd., NE
Washington, DC 20019

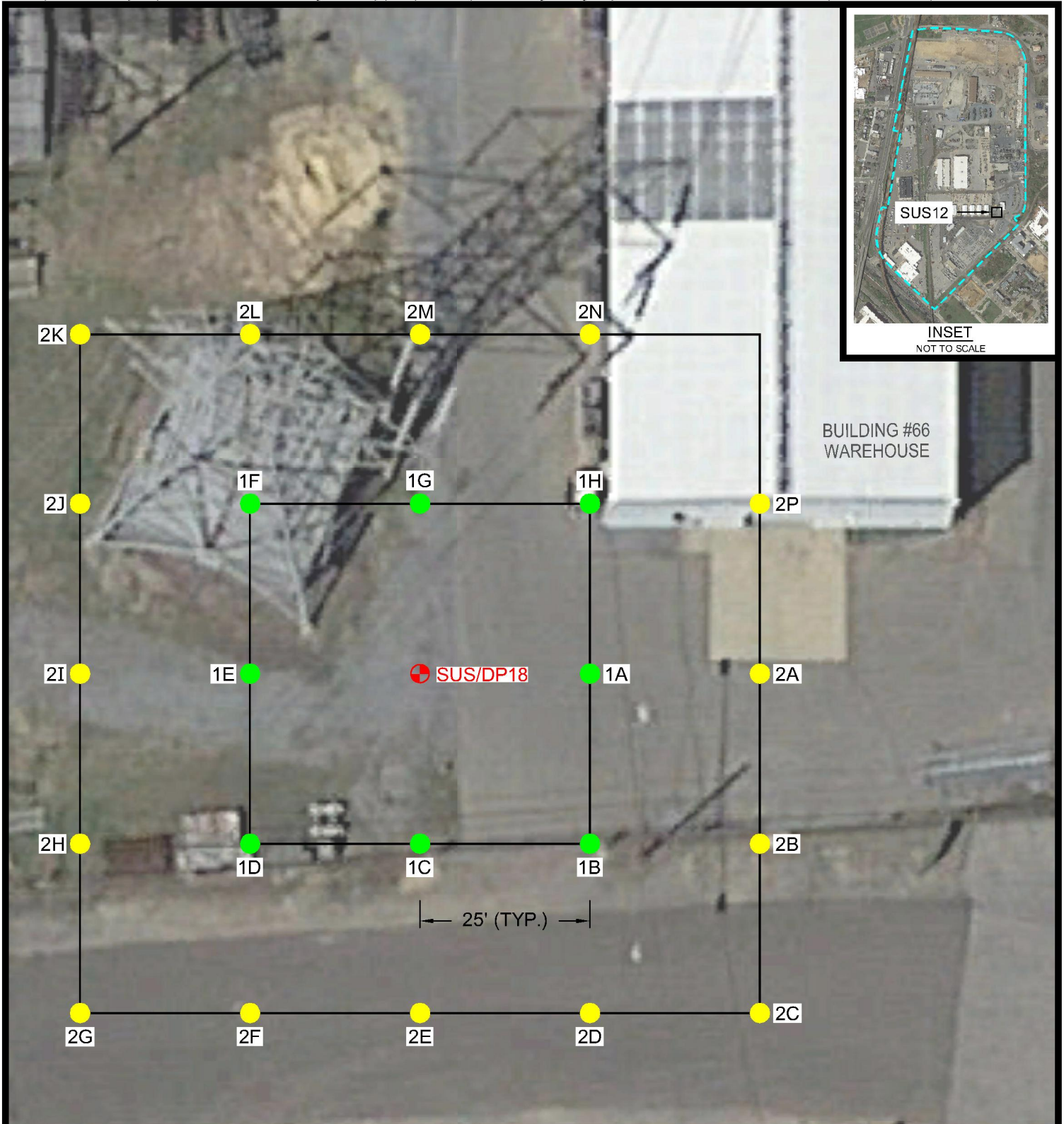
SUS12
Delineation Area

DATE: 09/29/2016

DRAWN BY: LAD

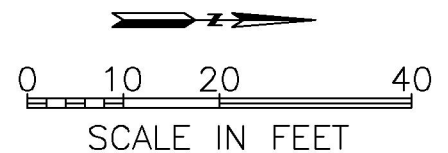
CHECKED BY: RD

FIGURE 3-6



LEGEND:

- PRIMARY SAMPLE LOCATION
- SECONDARY SAMPLE LOCATION
- ⊕ SURFACE AND SUBSURFACE SOIL SAMPLE LOCATION



NOTE: EXACT SAMPLE LOCATIONS ARE SUBJECT TO CHANGE PENDING FIELD VERIFICATION.



Benning Road Facility RI/FS Project
3400 Benning Rd., NE
Washington, DC 20019

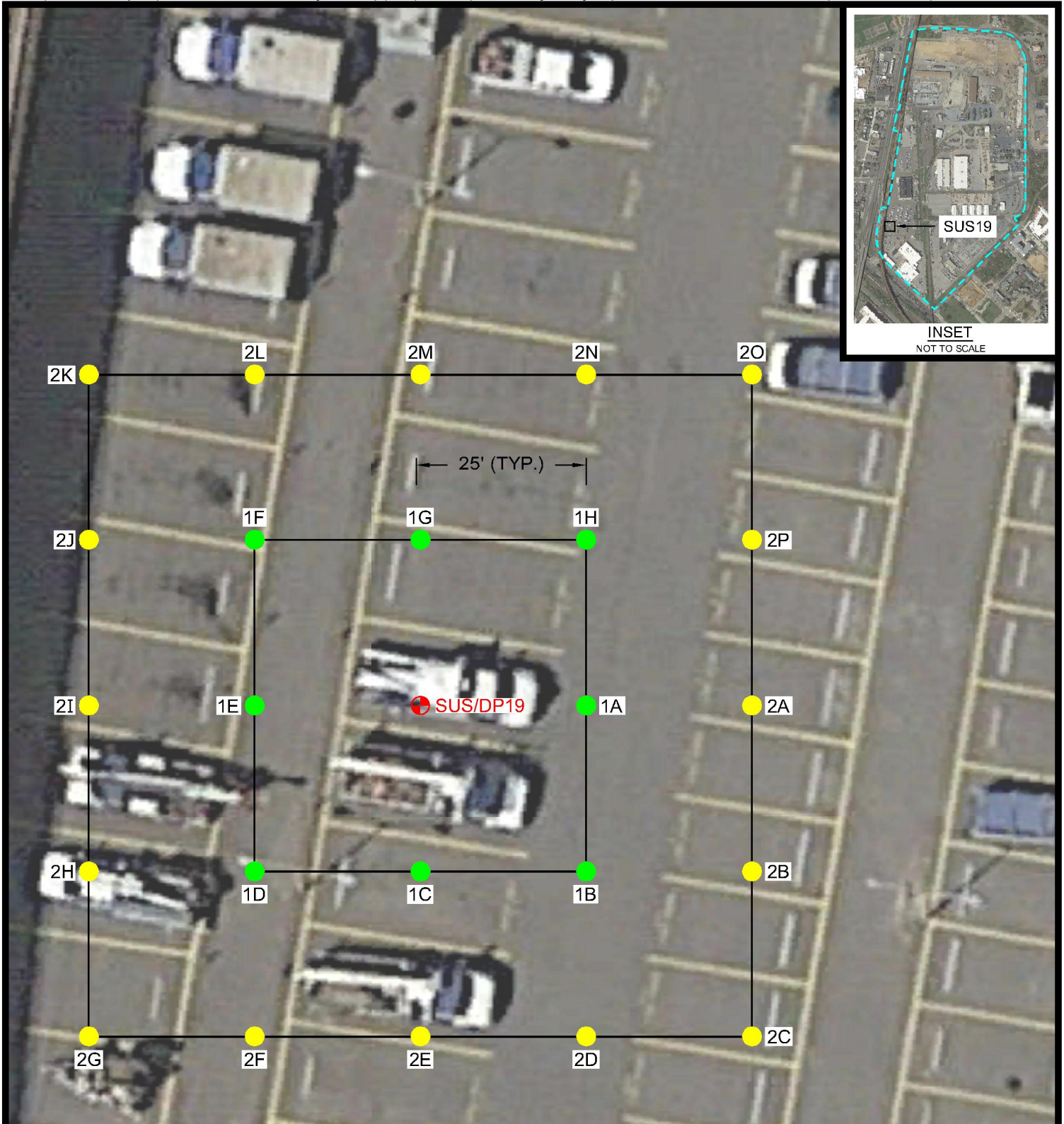
SUS18
Delineation Area

DATE: 09/29/2016

DRAWN BY: LAD

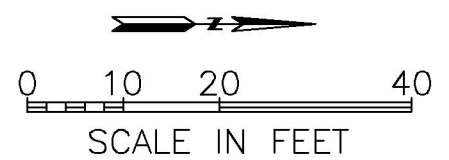
CHECKED BY: RD

FIGURE 3-7



LEGEND:

- PRIMARY SAMPLE LOCATION
- SECONDARY SAMPLE LOCATION
- ⊕ SURFACE AND SUBSURFACE SOIL SAMPLE LOCATION



NOTE: EXACT SAMPLE LOCATIONS ARE SUBJECT TO CHANGE PENDING FIELD VERIFICATION.



Benning Road Facility RI/FS Project
3400 Benning Rd., NE
Washington, DC 20019

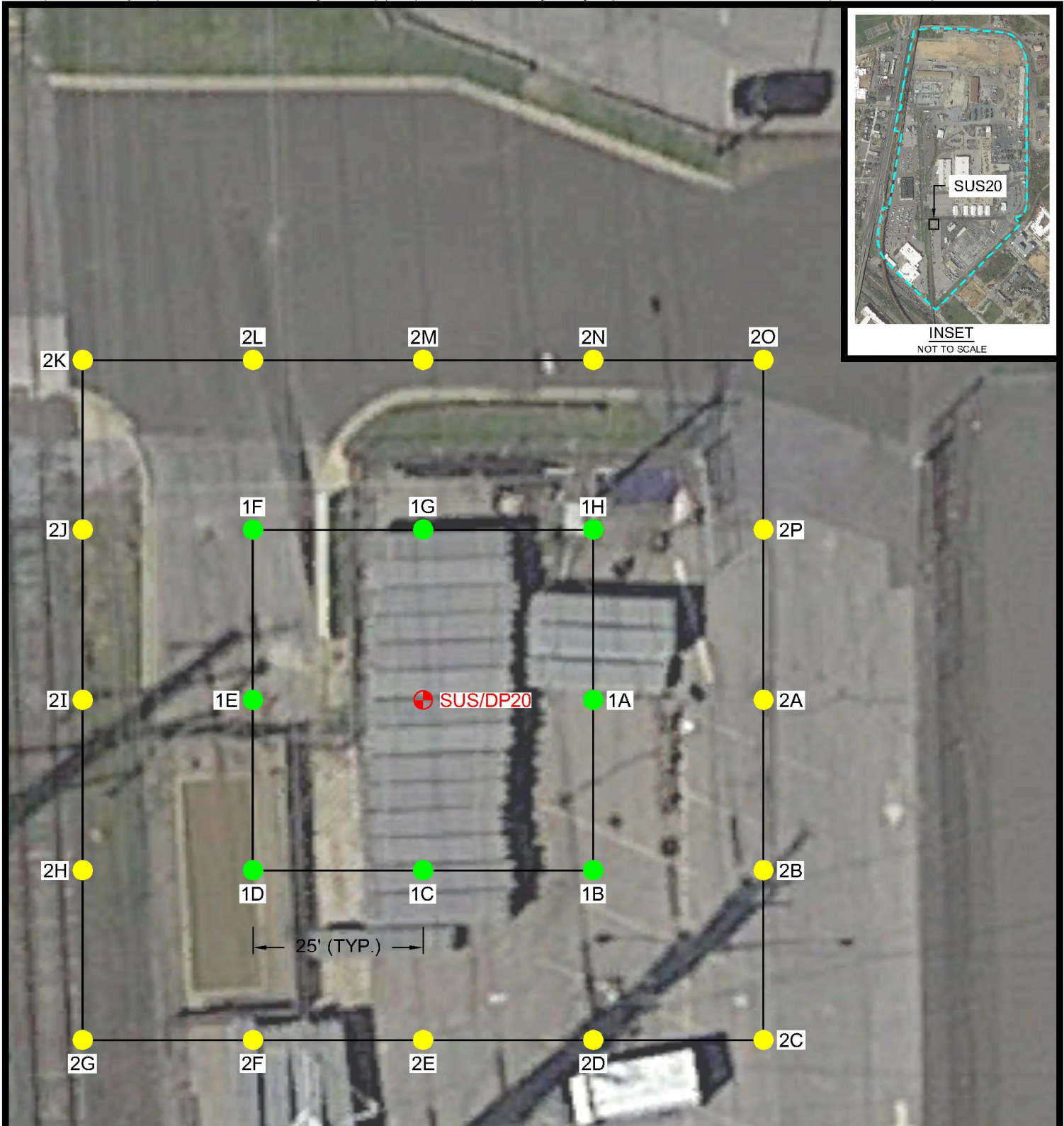
SUS/DP19
Delineation Area

DATE: 09/29/2016

DRAWN BY: LAD

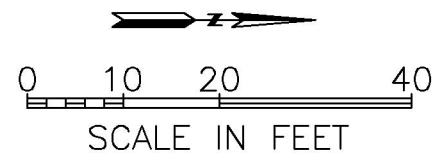
CHECKED BY: RD

FIGURE 3-8



LEGEND:

- PRIMARY SAMPLE LOCATION
- SECONDARY SAMPLE LOCATION
- ⊕ SURFACE AND SUBSURFACE SOIL SAMPLE LOCATION



NOTE: EXACT SAMPLE LOCATIONS ARE SUBJECT TO CHANGE PENDING FIELD VERIFICATION.



Benning Road Facility RI/FS Project
3400 Benning Rd., NE
Washington, DC 20019

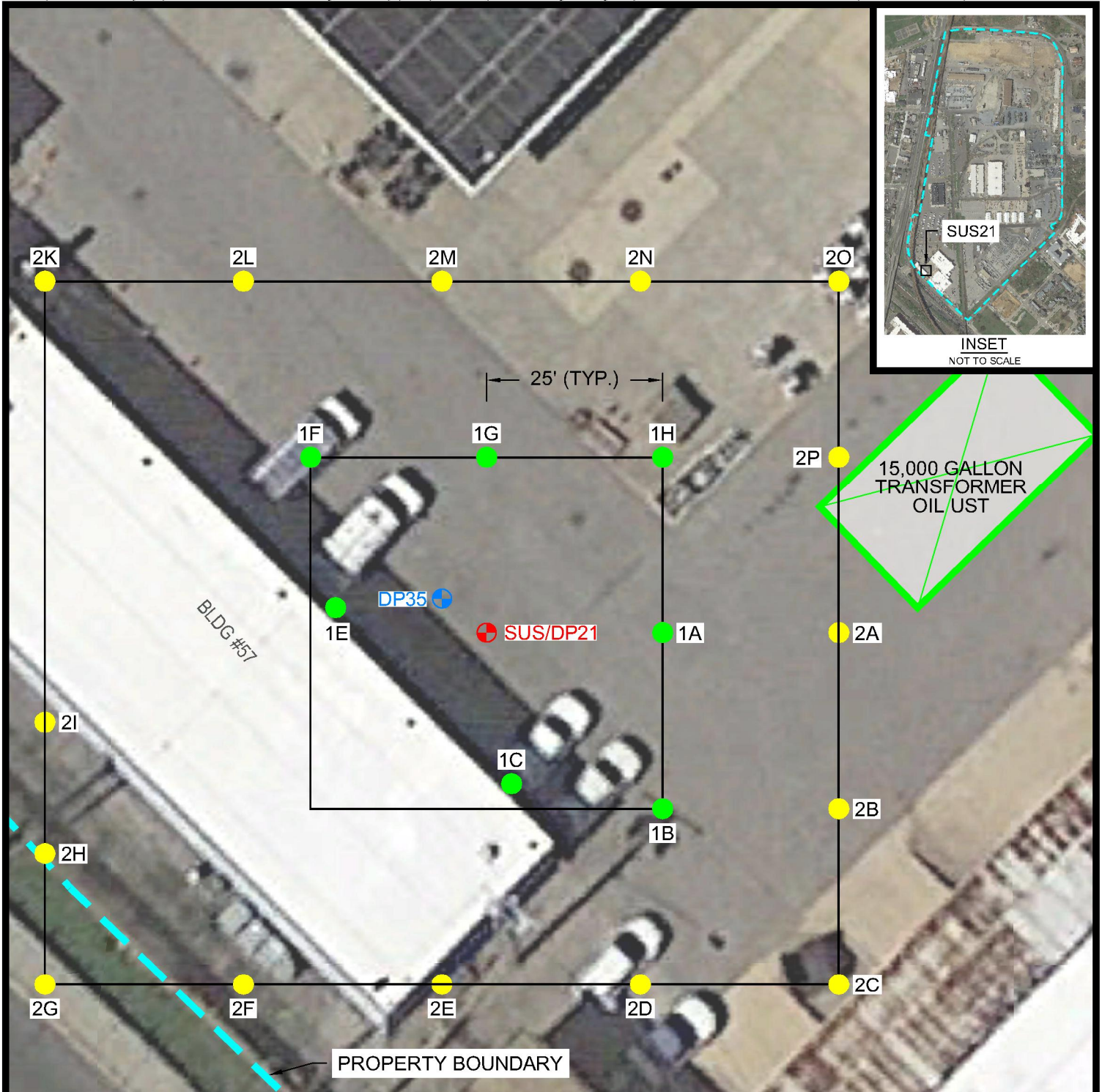
SUS20
Delineation Area

DATE: 09/29/2016

DRAWN BY: LAD

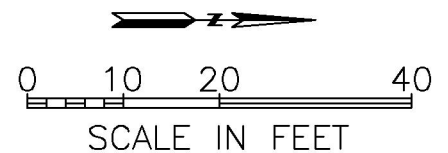
CHECKED BY: RD

FIGURE 3-9



LEGEND:

- PRIMARY SAMPLE LOCATION
- SECONDARY SAMPLE LOCATION
- ⊕ SURFACE AND SUBSURFACE SOIL SAMPLE LOCATION
- ⊕ DIRECT PUSH SAMPLE LOCATION



NOTE: EXACT SAMPLE LOCATIONS ARE SUBJECT TO CHANGE PENDING FIELD VERIFICATION.



Benning Road Facility RI/FS Project
3400 Benning Rd., NE
Washington, DC 20019

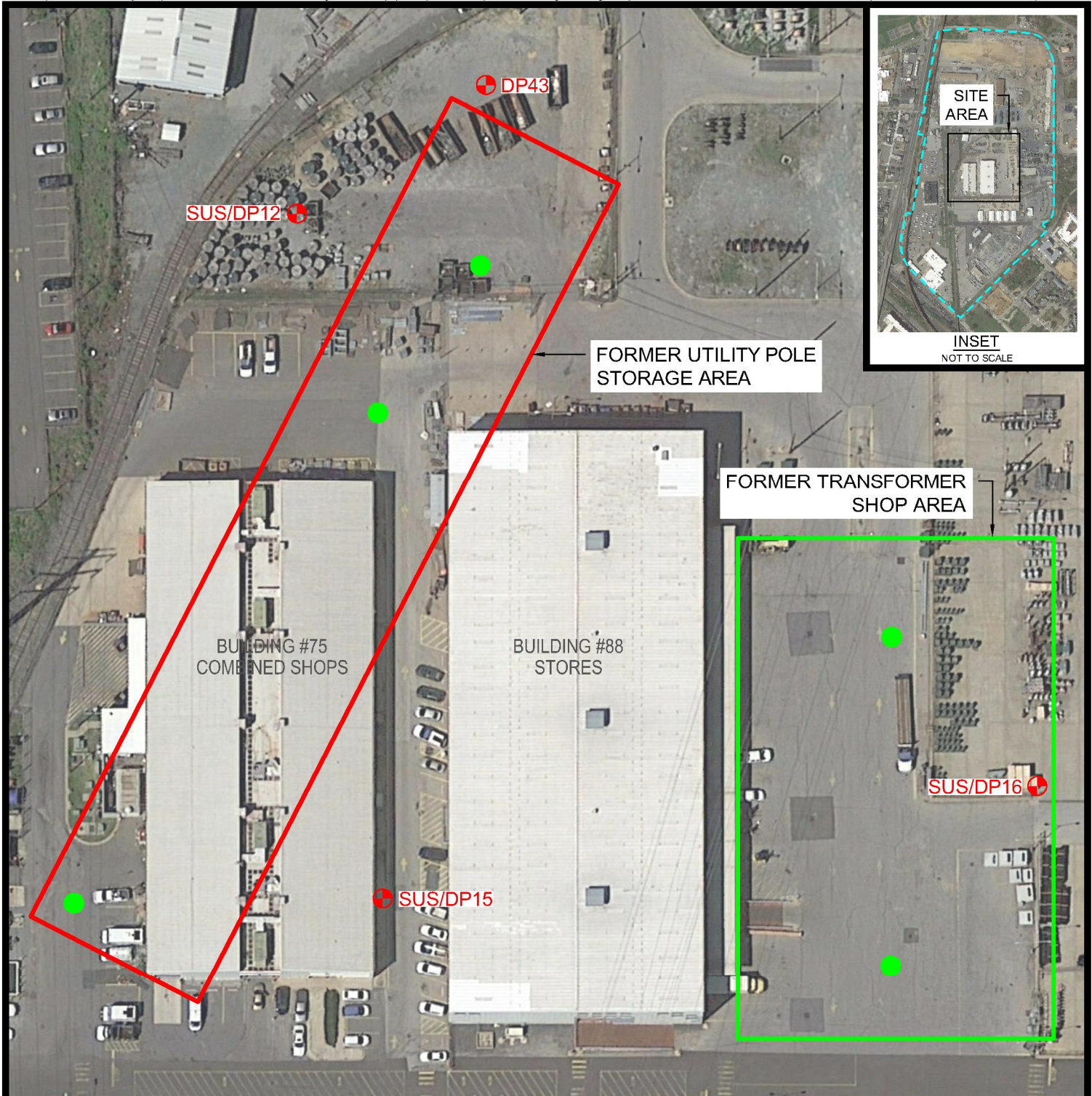
SUS21
Delineation Area

DATE: 09/29/2016

DRAWN BY: LAD

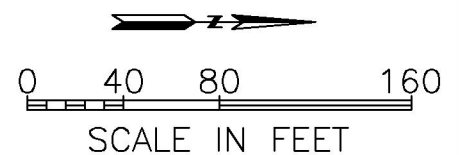
CHECKED BY: RD

FIGURE 3-10



LEGEND:

- PROPOSED SURFACE SOIL SAMPLE LOCATION
- ⊕ 2013 SOIL SAMPLE LOCATION



NOTE: EXACT SAMPLE LOCATIONS ARE SUBJECT TO CHANGE PENDING FIELD VERIFICATION.



Benning Road Facility RI/FS Project
3400 Benning Rd., NE
Washington, DC 20019

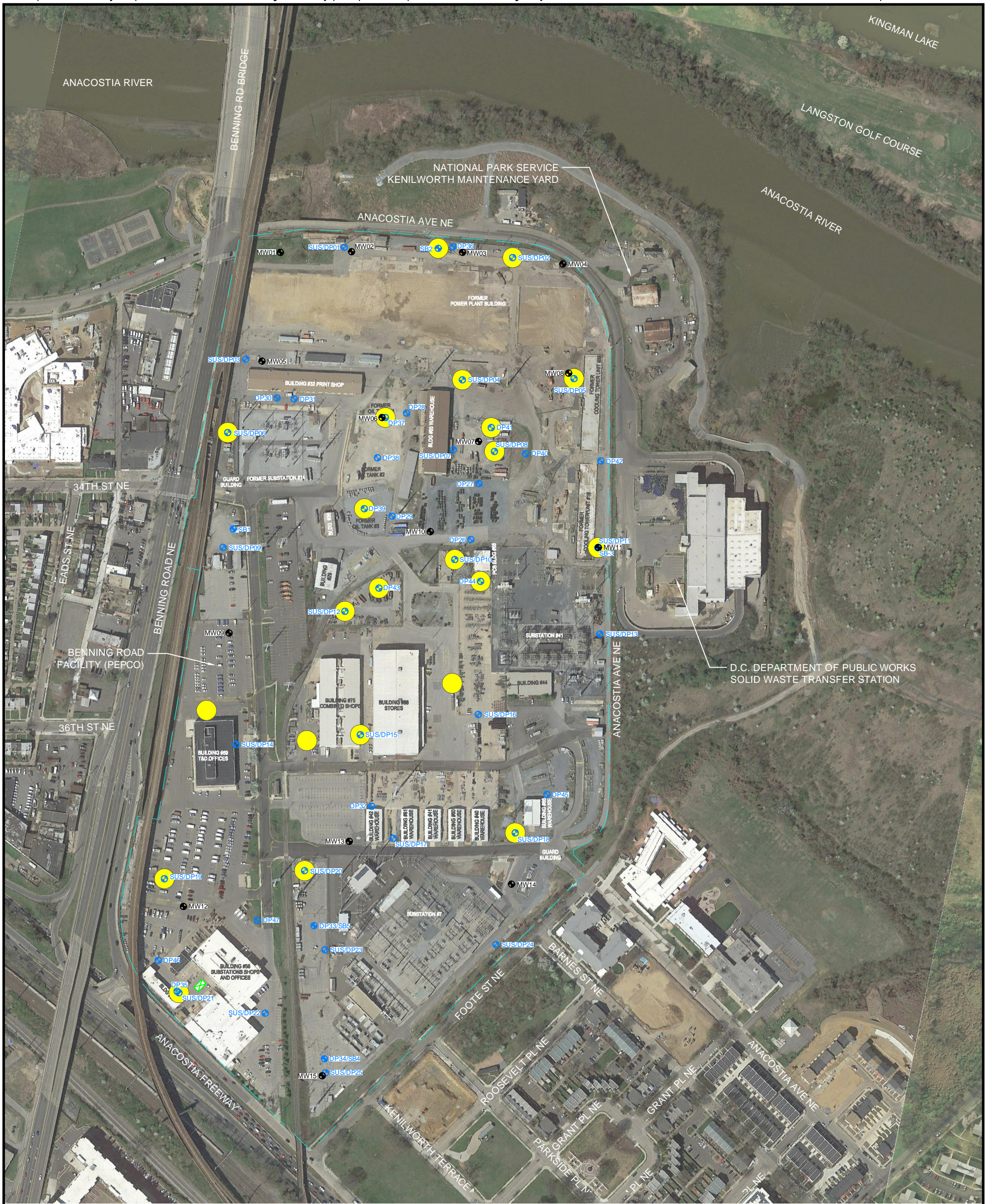
**Former Timber Pole Storage Area and
Transformer Shop Area Sample Locations**

DATE: 09/29/2016

DRAWN BY: LAD

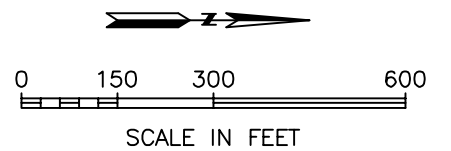
CHECKED BY: RD

FIGURE 3-11



LEGEND:

- PROPOSED FORENSICS LOCATION
- ⊕ 2013 SOIL SAMPLE LOCATION
- ⊕ MONITORING WELL LOCATION
- PROPERTY BOUNDARY



Benning Road Facility RI/FS Project
3400 Benning Rd., NE
Washington, DC 20019

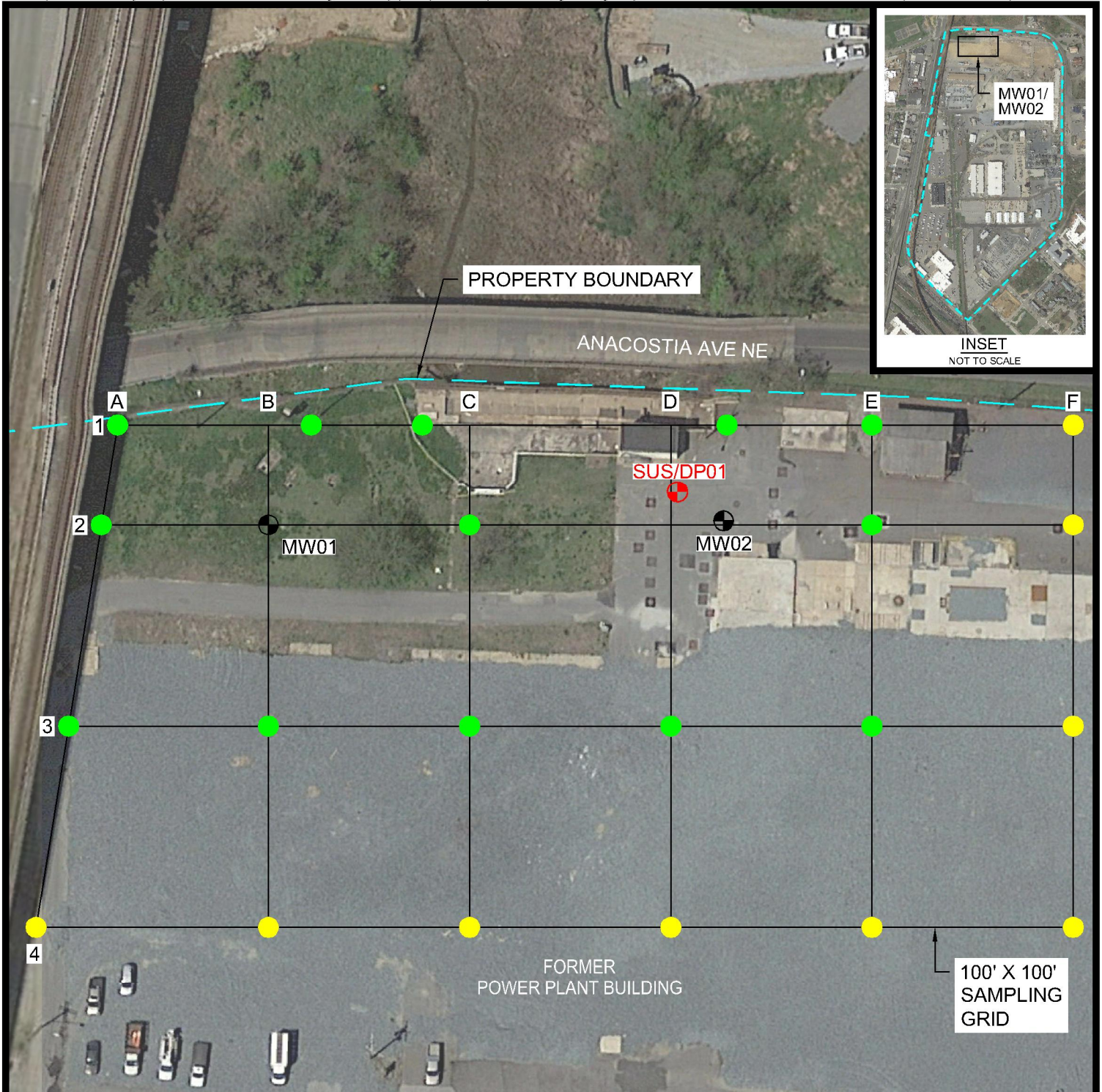
Onsite Soil Forensics
Sample Locations

DATE: 10/06/2016

DRAWN BY: LAD

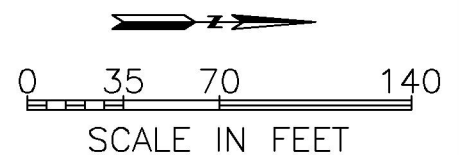
CHECKED BY: RD

FIGURE 3-12



LEGEND:

- PRIMARY SAMPLE LOCATION
- SECONDARY SAMPLE LOCATION
- ⊕ SURFACE AND SUBSURFACE SOIL SAMPLE LOCATION
- ⊕ MONITORING WELL LOCATION



NOTE: EXACT SAMPLE LOCATIONS ARE SUBJECT TO CHANGE PENDING FIELD VERIFICATION.



Benning Road Facility RI/FS Project
 3400 Benning Rd., NE
 Washington, DC 20019

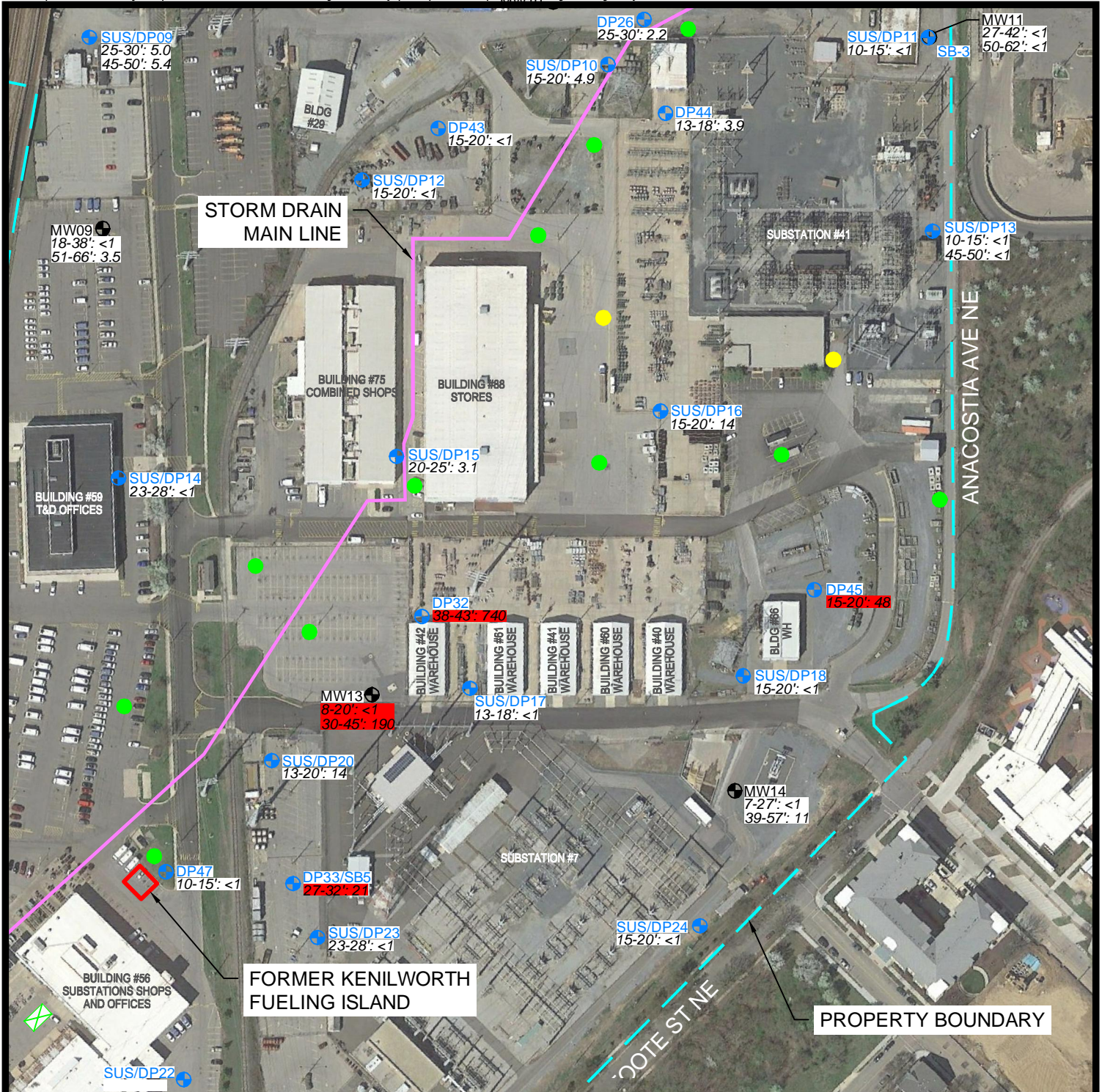
**MW01 and MW02
 Delineation Area**

DATE: 09/29/2016

DRAWN BY: LAD

CHECKED BY: RD

FIGURE 3-13

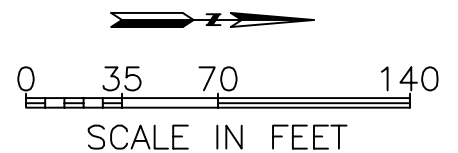


LEGEND:

- PRIMARY GROUNDWATER SAMPLE LOCATION
- SECONDARY GROUNDWATER SAMPLE LOCATION
- ⊕ 2013 SOIL AND GROUNDWATER SAMPLE LOCATION
- ⊙ MONITORING WELL LOCATION

15-20': 14 GROUNDWATER MTBE CONCENTRATION (µg/l)

15-20': 48 DETECTION ABOVE THE PROJECT SCREENING LEVEL OF 14 µg/l



NOTE: EXACT SAMPLE LOCATIONS ARE SUBJECT TO CHANGE PENDING FIELD VERIFICATION.



Benning Road Facility RI/FS Project
3400 Benning Rd., NE
Washington, DC 20019

MTBE
Delineation Area

DATE: 10/07/2016

DRAWN BY: LAD

CHECKED BY: RD

FIGURE 3-14



Figure 3-15
Proposed Site-specific Background
Surface and Subsurface Soil
Sample Locations
Pepeco - Benning Road Facility
Washington, DC

0 0.15 0.3 0.6 Miles

Legend

- Proposed Site Specific Background Soil Sample Location
- Waterside Investigation Area
- Benning Road Landside Investigation Area



\\uschi1fp001\data\Projects\Jobs\Incl. Service\Project Files\Pepeco Benning Road RI_FSG\IS\WXD\2016\Figure3-1



Figure 3-16
Proposed Site-specific Background Groundwater
Sample Locations
Pepeco - Benning Road Facility
Washington, DC

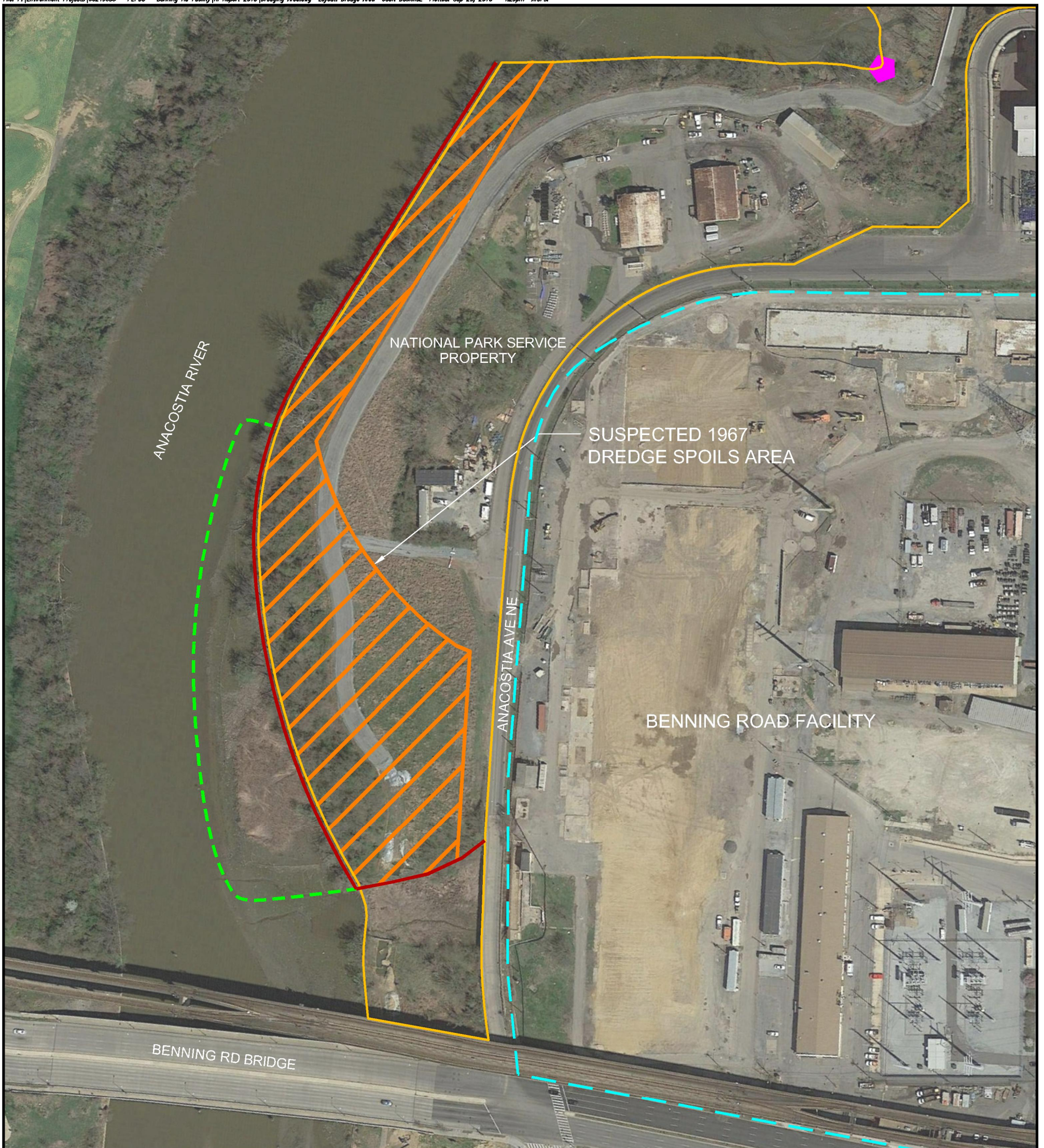
0 0.3 0.6 1.2 Miles

Legend

- Background Groundwater Well Location
- Background Groundwater Geoprobe Location
- Waterside Investigation Area
- Benning Road Landside Investigation Area
- 2 Mile Site Radius

AECOM

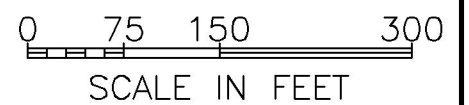




LEGEND:

- - - BENNING ROAD FACILITY PROPERTY BOUNDARY
- SUSPECTED 1967 DREDGE SPOILS AREA
- APPROXIMATE LOCATION OF SEA WALL
- APPROXIMATE FORMER CONSTRUCTED WETLANDS BOUNDARY
- NATIONAL PARK SERVICE PROPERTY BOUNDARY
- ◆ NPDES OUTFALL TO ANACOSTIA RIVER

NOTE:
SUSPECTED DREDGE SPOILS AREA TAKEN FROM 1967 PEPCO DESIGN DRAWING NO. 831-81.113.



Benning Road Facility RI/FS Project
3400 Benning Rd., NE
Washington, DC 20019

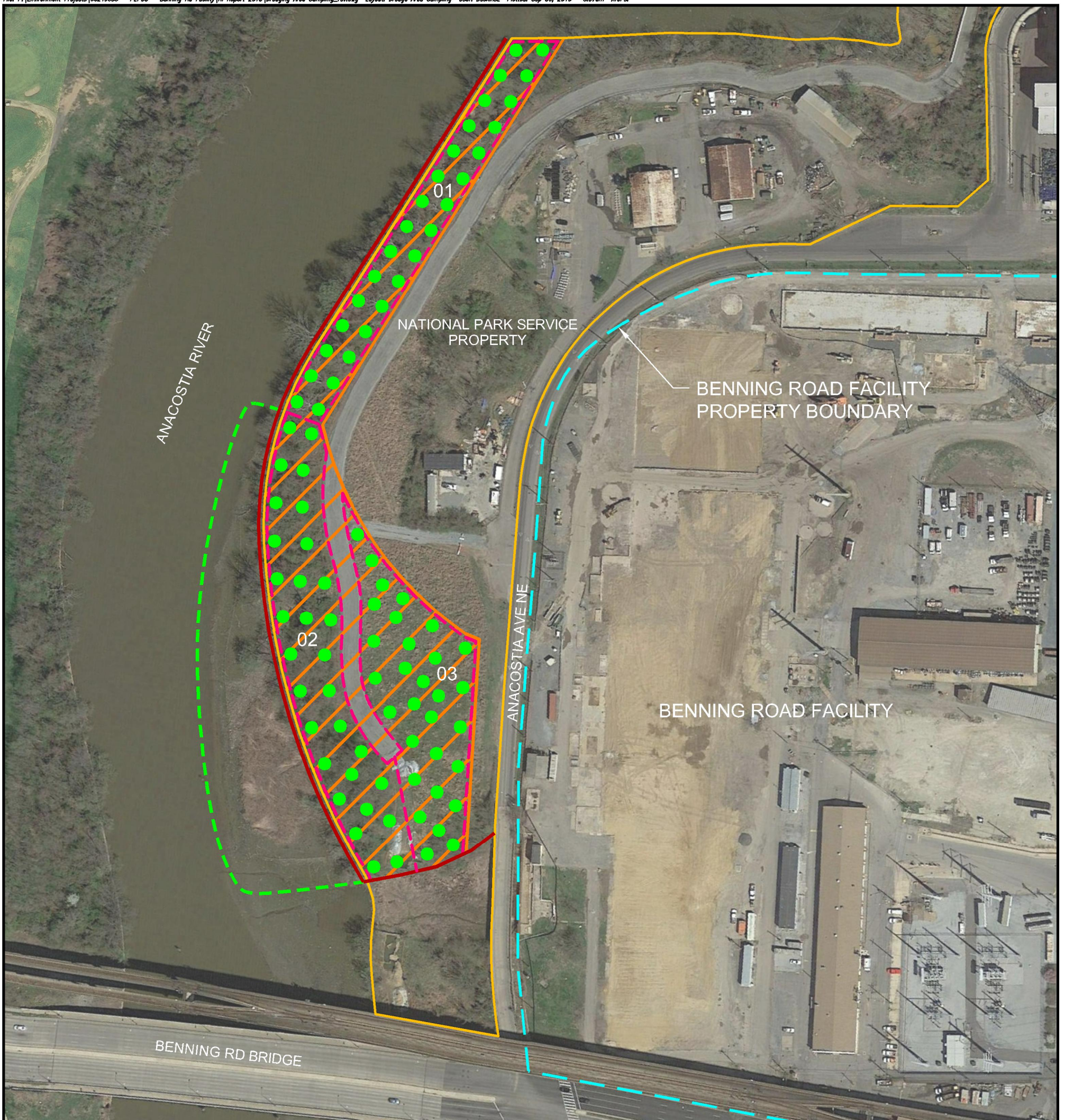
Suspected 1967 Dredge Spoils Staging Area

DATE: 09/29/2016

DRAWN BY: LAD

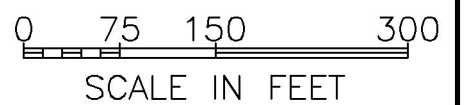
CHECKED BY: RD

FIGURE 3-17



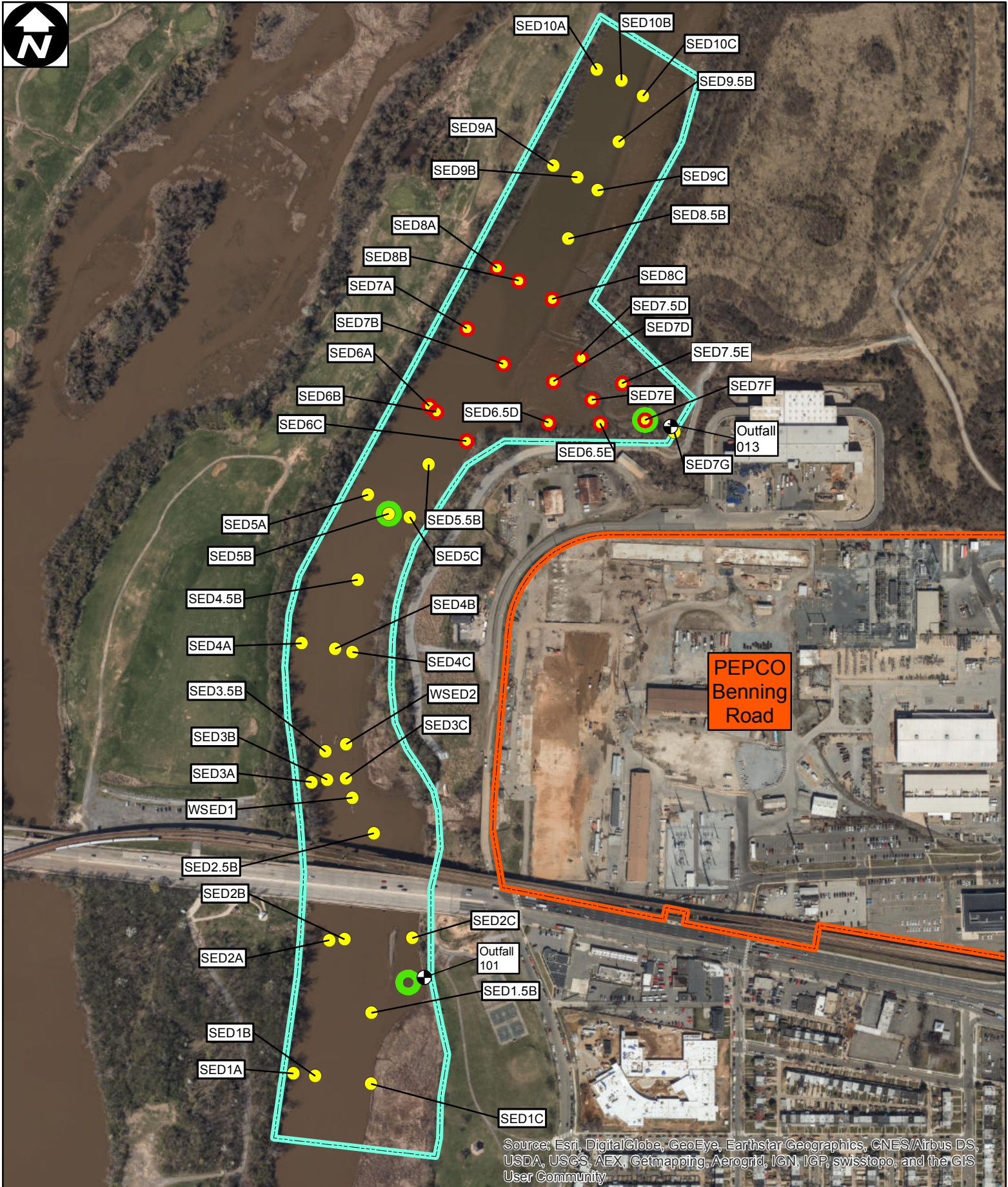
LEGEND:

- INCREMENT LOCATION
- DECISION UNIT BOUNDARY
- SUSPECTED 1967 DREDGE SPOILS AREA
- NATIONAL PARK SERVICE PROPERTY BOUNDARY
- APPROXIMATE LOCATION OF SEA WALL
- APPROXIMATE FORMER CONSTRUCTED WETLANDS BOUNDARY



NOTE:
SUSPECTED DREDGE SPOILS AREA TAKEN FROM 1967 PEPCO DESIGN DRAWING NO. 831-81.113.

	Benning Road Facility RI/FS Project 3400 Benning Rd., NE Washington, DC 20019		Proposed NPS Property Sample Locations	
	DATE: 09/29/2016	DRAWN BY: LAD	CHECKED BY: RD	FIGURE 3-18



Source: Esri, DigitalGlobe, GeoEye, Earthstar Geographics, CNES/Airbus DS, USDA, USGS, AEX, Getmapping, Aerogrid, IGN, IGP, swisstopo, and the GIS User Community

**Proposed Near-Site Sediment Sampling Locations
Pepco – Benning Road Facility
Washington, DC**

0 125 250 500 Feet

Legend

- Proposed Surface Sediment Sample Locations
- Proposed High Resolution Coring Location
- 2013-2014 RI/FS Sediment Sampling Locations
- Outfall Locations
- Waterside Investigation Area
- Benning Road Facility Property Boundary



Figure 3-19



Source: Esri, DigitalGlobe, GeoEye, Earthstar Geographics, CNES/Airbus DS, USDA, USGS, AEX, Getmapping, Aerogrid, IGN, IGP, swisstopo, and the GIS User Community

P:\Jobs\Incl_Service\Project Files\Peppo Benning Road RI_FS\GIS\MXD\2016\13-18_SiteSpecific\BKG\SedSample.Loc

Legend

- Proposed In-River Background Sediment Sample Location
- Proposed Forensics Sediment Sample Location
- ◆ Proposed Storm Drain Sediment Sample Location
- ▲ 2013 RI/FS Background Sediment Sample Location
- Waterside Investigation Area
- Benning Road Facility Property Boundary

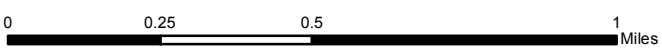


Figure 3-20
Background and Forensics Sediment
Sample Locations
Peppo - Benning Road Facility
Washington, DC



Oct. 2016